



"YOUR PARTNER IN AIR MOVEMENT"

HVAC & AIR VENTILATION END TO END SOLUTIONS

About Us

Founded by a mechanical engineer with **19 + years of experience in HVAC and air ventilation manufacturing**, our company is driven by strong technical expertise and global industry exposure. The promoter holds a **B. Tech in Mechanical Engineering** and a **PGDBA in Operations & Research**, with extensive hands-on experience in **air handling and ventilation systems** across Indian, Indo-European joint venture, and US-Based organizations.

Built on this foundation, we specialize in **manufacturing and turnkey HVAC solutions** that deliver **reliable performance, energy efficiency, and application-focused design** for commercial and industrial environments.

Our Value Proposition

Ease of Doing Business
Simple processes, clear communication, and dependable execution.

Application-Driven Engineering Expertise
Solutions designed to meet exact project and performance requirements.

Best-in-Class Responsiveness
Quick turnaround, proactive support, and timely product & project delivery.

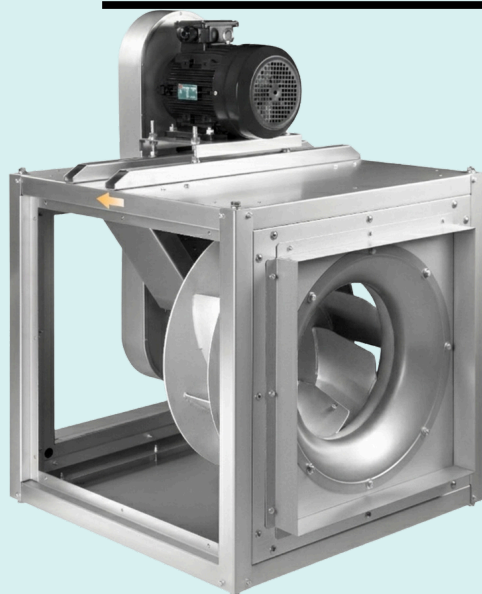
FANS

Direct Drive Duct Cabinet Inline Fan

- Application- Supply/Exhaust/Clean Air/General ventilation
- Galvanized housing construction
- Backward inclined, Aviation grade Aluminum Impeller
- Low Power Consumption /Low sound level
- Compact in size, Installation flexibility/Ease of service
- Available in Single & Three Phase
- Optional- Air pre filter and 25 mm Insulated housing



| | |
|-------------------------|----------------------|
| Capacity: | 850 CMH TO 10000 CMH |
| Static Pressure: | UP TO 30 mmwg |



Belt Driven Cabinet Fans

- Application - Supply/Exhaust/ Pressurization/ Kitchen / Smoke Spill
- Indoor & Outdoor
- Easy Installation In Ducted Non Ducted System
- Capacity- up to 25000 CMH
- Static Pressure - Up to 70 mm of H₂O

| | |
|-------------------------|-----------------------|
| Capacity: | 5000 CMH TO 25000 CMH |
| Static Pressure: | UP TO 70mmwg |

FUME EXHAUST FANS

Kitchen / Laundry fan

- Designed for ventilation of Smoke, grease-laden, humid and hot air with temperature up to 120°C
- Galvanized housing construction
- Backward inclined, non overloading, statically and dynamically balanced, Aviation grade Aluminum Impeller to provide maximum efficiency
- Low Power Consumption /Low sound level
- Installation flexibility/Ease of service
- Available in Single & Three Phase



| | |
|-------------------------|----------------------|
| Capacity: | 850 CMH TO 25000 CMH |
| Static Pressure: | UP TO 70mmwg |

FANS

Power roof ventilators upblast Fan

- Rhombus hood- specially designed to withstand at high speed wind and cooling fins on sides to efficacious cooling of motor to maximize motor life.
- Curb Cap- single piece weather tight curb cap with punched mounting holes to easily install in roof.
- Galvanized housing construction
- Backward inclined, Aluminum Impeller
- Low Power Consumption /Low sound level
- Available in Single & Three Phase



| | |
|-------------------------|----------------------|
| Capacity: | 850 CMH TO 10000 CMH |
| Static Pressure: | UP TO 30 mmwg |

Centrifugal Single Width Fan

- Application- Supply/Exhaust, Heating, Filtration, Kitchen, Fume exhaust
- High-pressure capacity to handle larger ducted systems or filtration requirements
- Heavy duty high GSM galvanized housing construction
- Statically and dynamically balanced impeller to provide maximum efficiency
- Low Power Consumption
- Available in Three Phase



| | |
|-------------------------|-----------------------|
| Capacity: | 5000 CMH TO 25000 CMH |
| Static Pressure: | UP TO 70mmwg |

Circular inline Fan

- Available upto capacity range of 1880 cubic mtr/hr (1100 CFM)
- Used for supply/exhaust air application
- Dynamically balanced backward curved fan impeller
- Direct drive external rotor motor with ball bearing
- Motor equipped with overheat protection with auto restart
- Mounting brackets supplied as standard
- Fan can be supplied with Pre-fitted Hum-Free speed controller

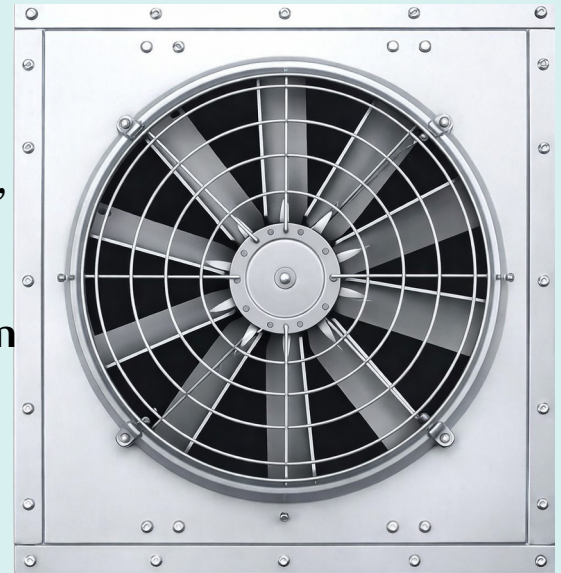


FANS

Direct Drive Wall Mount Fans

- Application- Factories, Warehouses, car park, Industrial environment, Date centers
- Low Power Consumption
- Inlet and outlet guard for 100% safe operation

| SIZES | AIR FLOW (CMH) | Voltage (V) | Power (W) | RPM FAN | Sound(dBA) |
|-------|----------------|-------------|-----------|---------|------------|
| 630 | 20500 | 220/415 | 1500 | 1450 | <85 |
| 500 | 8500 | 220/415 | 750 | 1450 | <85 |



Belt Driven Wall Mount Fans

Application- Factories, Poultry Farm, Agriculture

| SIZES | AIR FLOW (CMH) | Voltage (V) | Power (W) | RPM FAN | Sound(dBA) |
|-------|----------------|-------------|-----------|---------|------------|
| 1530 | 55800 | 220/415 | 1500 | 325 | <65 |
| 1380 | 44000 | 220/415 | 1100 | 440 | <65 |
| 1220 | 38000 | 220/415 | 750 | 450 | <65 |
| 1000 | 32000 | 220/415 | 550 | 600 | <65 |
| 800 | 20000 | 220/415 | 370 | 600 | <65 |
| 650 | 16000 | 220/415 | 370 | 600 | <65 |



Propeller Fan

Application- Supply and Exhaust- High Flow with low resistance

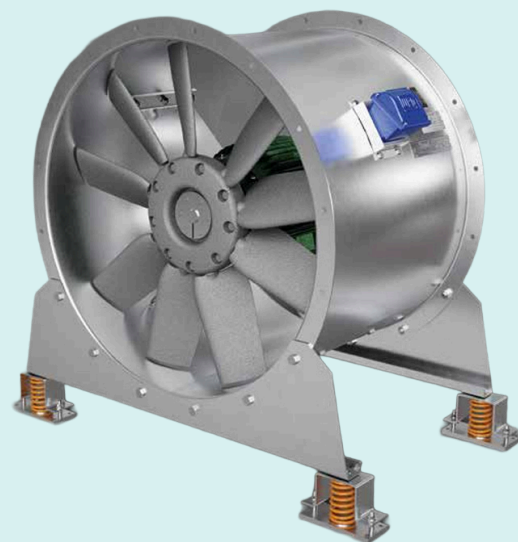
| SIZES | AIR FLOW (CMH) | Voltage (V) | Power (W) | RPM FAN | Sound(dBA) |
|-------|----------------|-------------|-----------|---------|------------|
| 600 | 10500 | 220 | 750 | 1380 | 72 |
| 450 | 4800 | 220 | 230 | 1350 | 64 |
| 300 | 2100 | 220 | 125 | 2400 | 58 |
| 200 | 900 | 220 | 50 | 2450 | 49 |



FANS

Tube Axial Fans

- Direct Drive Tube Axial Fan
- Indoor & Outdoor
- Easy Installation In Ducted and Non Ducted System
- Size -315 to 1600 mm Dia
- Capacity- up to 100000 CFM



FANS

Silent ceiling exhaust Fan

- Application- Laboratory, Bathroom, Hotel, Cafeteria, Smoke room
- Mount under false ceiling
- Grilled Inlet /Ducted exhaust
- Very low sound/Low Power Consumption
- Capacity- 200 CFM to 1500 CFM



COOLERS

- Application- Industrial/ Commercial
- Ducted exhaust
- Auto Clean drain Valve



| SIZES | AIR FLOW (CMH) | Voltage (V) | Power (W) | Weight (Kg) | Sound (dBA) |
|-------|----------------|-------------|-----------|-------------|-------------|
| M-300 | 30000 | 415 | 3000 | 100 | <80 |
| M-180 | 18000 | 220/415 | 1100 | 55 | <70 |

HVAC AIR DUCTS

Flexible Ducts and Duct Connector

- Non- Insulated (Size/Length- 100-500mm/25ft)
- Insulated (Size/Length- 100-450mm/25ft)
- Semi Rigid (Size/Length- 75-500mm/10ft)
- Fire rated (Size/Length- 100-450mm/10ft)

- Available in PVC coated & Silicone coated fabric
- Fire retardant PVC coated fabric conforming to class 'B' fire rating suitable up to temperature of 85°C
- Fireproof Silicone coated fabric tested & suitable upto temperature range of 270°C for 1 hour
- High anti-tear & tensile strength ensure longer life

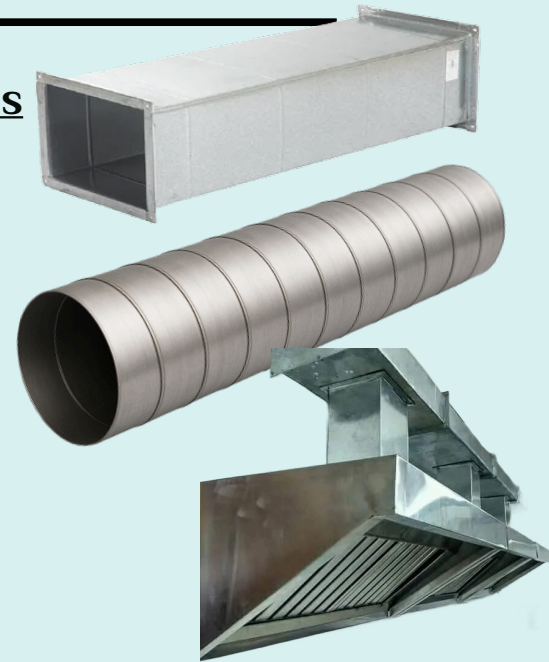


HVAC AIR DUCT/Commercial Kitchen Hoods

Type: Round, Rectangle and Oval

Material- MS,GI,AL,SS

Commercial Kitchen Hoods : GI and SS



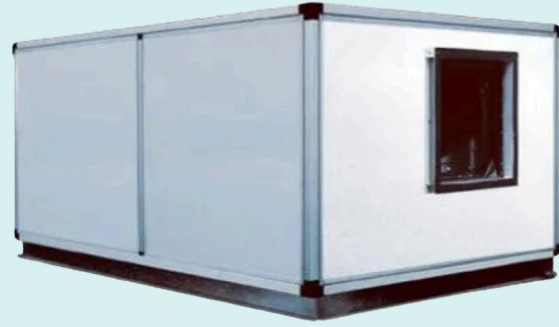
LARGE DIAMETER FANS High Volume Low Speed Fan (HVLS)

- Application- Industrial and commercial building
- Available up to capacity range up to 200000 CFM
- Size range - 16 feet to 24 feet
- Speed control



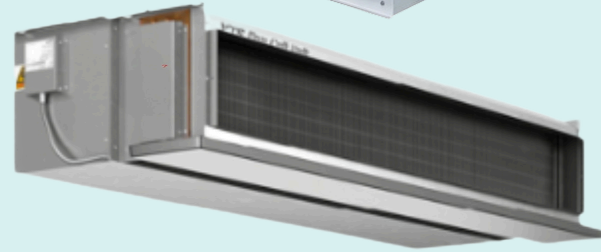
END TO END SOLUTION

We offer end-to-end service, covering the supply, professional installation, precision commissioning, and final handover of essential air handling equipment for all commercial and industrial applications.



Product List:

- Air Handling Units (AHU)
- Air Washer Systems
- Fan Coil Units (FCU)
- Fan Filter Units (FFU)
- Air Curtains
- Air Distribution Terminals (Grilles, Diffusers, etc.)
- Complete Clean Rooms (Panels, HVAC, Ducting, Electrical..)



CLEAN ROOM SOLUTION

Complete System Delivery: Including insulated panels, HVAC integration, specialized ducting, and electrical systems



AIR PURIFIERS

COMMERCIAL & INDUSTRIAL

German Filtration Excellence

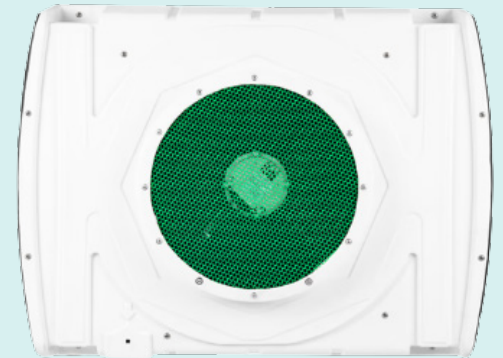
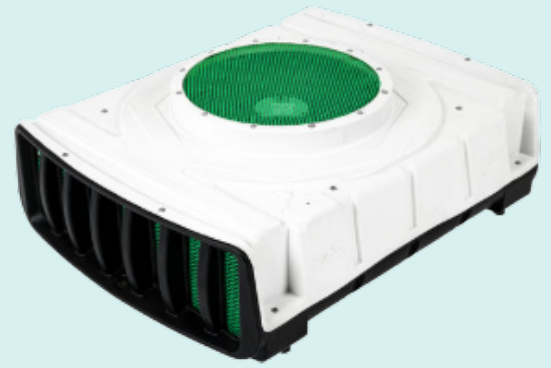
Nano fiber-enhanced filters designed by MANN+HUMMEL,

Providing superior dust capture and best-in-class flow resistance

Purifies 2000 SQFT in 10 minutes

Powerful performance for large spaces.

Live Report Sharing



| PURE AIR Technical Specifications | |
|---|--|
| Engineered for Performance. Designed for India. | |
| Feature | Specification |
| Filter | Premium Filters by Mann+Hummel (Germany) |
| Manufacturing | Mass Production—Ready, Proudly Made in India. |
| Air Purifier Technology | Removes Harmful Particles: PM0.1, PM1.0, PM2.5, & PM10. |
| Filter Design | Nano Fiber-Enhanced Filters for Superior Dust Capture and Airflow. |
| Filtration Performance | Two-Stage Filtration for Exceptional Particle Removal. |
| Filter Life | Lasts Up to 6 Months, Reducing Maintenance Costs. |
| Filter Efficiency | Over 95% for PM10 and 80% for PM2.5 (ISO 16890 Certified). |
| Wall Mount | Convenient Wall Mount for Space-Saving Installation. |
| Noise Levels & Energy Efficiency | Low Noise Levels (<55 dB) for a Distraction-Free Environment. |
| Product Dimensions | Compact Design: 950 mm (L) × 750 mm (W) × 250 mm (H). |
| Airflow Capacity | High-Capacity 2,000 m³/h for Rapid Air Circulation. |
| Power Consumption | Efficient 80W Power Usage for Lower Operating Costs. |
| Time to Recirculate Air | Quickly Refreshes a 1,000 Sqft Area in Just 4 Minutes. |
| Warranty | 3 Years (Excluding Electronics); Filters Replaced as Required. |
| Filter Disposal | Professional, Responsible Filter Disposal Service. |
| Service Interval | Requires Service Only Once Every 6 Months. |

Customised - For Bulk Order Only

Works: SUV FANS LLP
Block-7, B229, RIICO Industrial Area Bhiwadi, Alwar, Rajasthan